

Connecting to the Wireless network

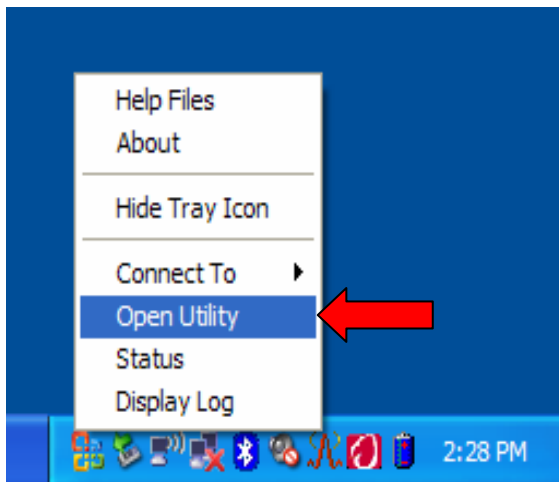
(Broadcom cards)

There are four accounts that can be used on these laptops; they are Boelocal, EdTech, Teacher and Student. This procedure will have to be done in all four; it will not automatically carry over between computer profiles.

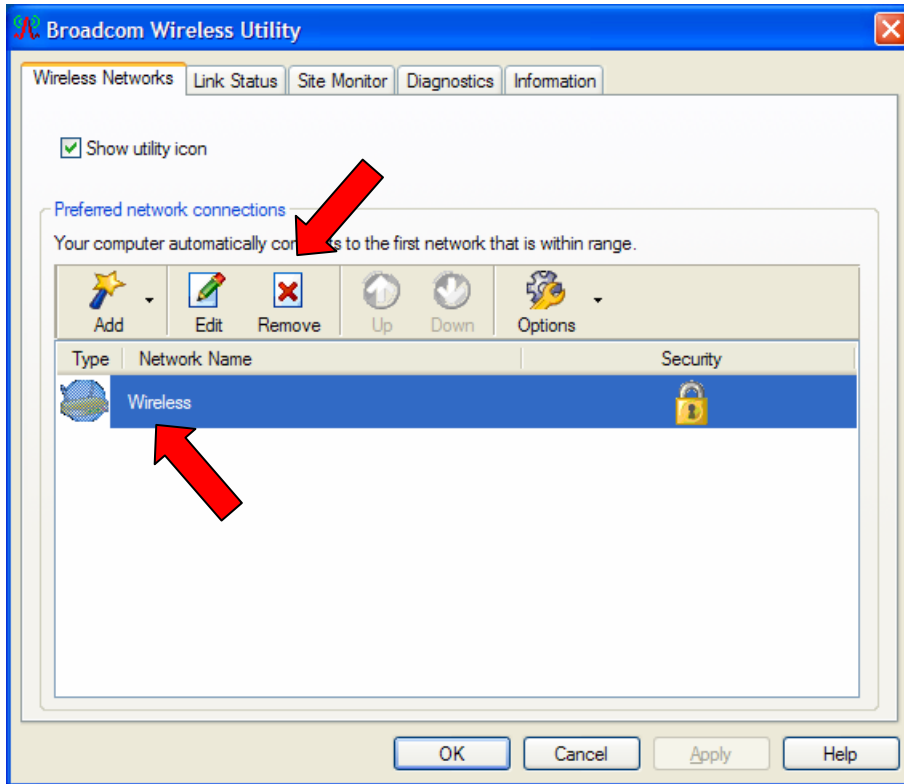
1. Log in into the laptop, in this document we are using the Student profile
2. Right click on the “A” symbol in the system tray



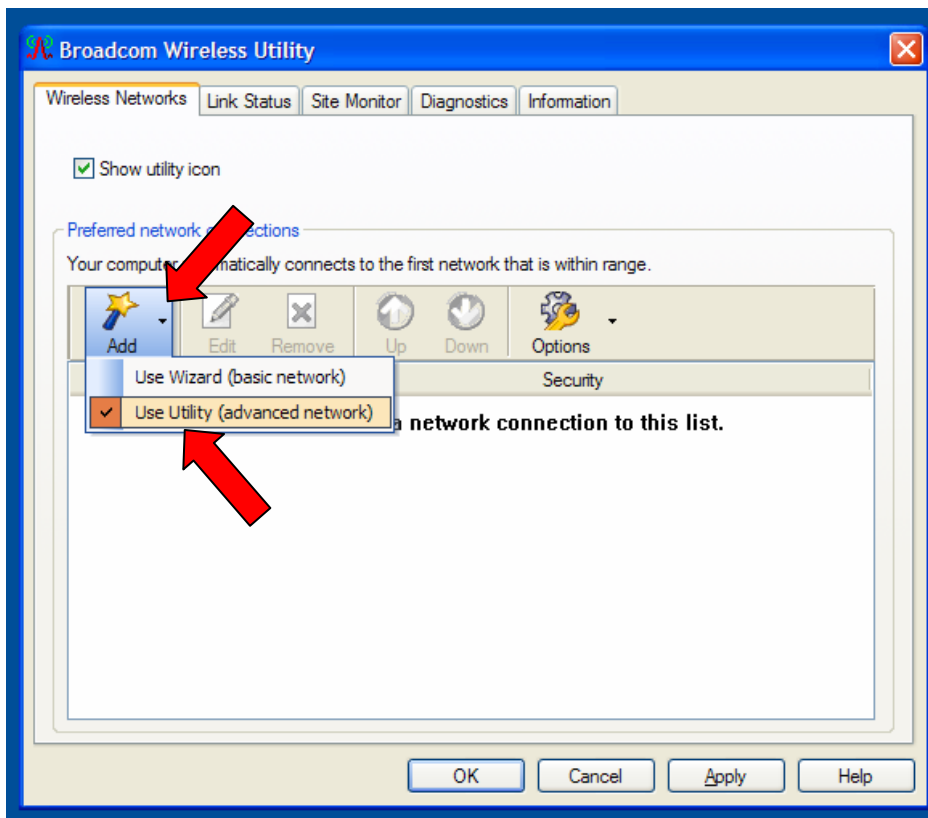
3. Select Open Utility



- IF you are having wireless connectivity issues, highlight Wireless and then click on Remove



- Click on the pull down arrow of the **Add** button and select **Use Utility (advanced network)**



6. For the Student profile, enter the following information, then go to step 8:

SSID	Wireless (Note, this is case sensitive)
This is an ad hoc network	<Leave blank>
Network Authentication	802.1x
EAP method	EAP-FAST
Inner EAP method	- NONE -
Prompt for user name ...	<Leave blank>
Use Windows user name...	<Leave blank>
Domain\User Name	bboe\student
Password	student
Confirm password	student

Wireless Network Connection Settings

Network name (SSID):

This is an ad hoc network Channel:

Network authentication:

EAP method: Inner EAP method:

Network Key
 User Name/Password
 Client Identity
 Server Identity
 Options

Prompt for user name and password
 Use Windows user name and password
 Include Windows domain

Domain\User Name:

Password:

Confirm password:

Hide characters as I type

7. For the BoeLocal, EdTech and Teacher profiles, enter the following information

SSID	Wireless (Note, this is case sensitive)
This is an ad hoc network	<Leave blank>
Network Authentication	802.1x
EAP method	EAP-FAST
Inner EAP method	- NONE -
Prompt for user name ...	Enable

Wireless Network Connection Settings

Network name (SSID):

This is an ad hoc network Channel: ▾

Network authentication: ▾

EAP method: ▾

Inner EAP method: ▾

Network Key
 User Name/Password
 Client Identity
 Server Identity
 Options

Prompt for user name and password

Use Windows user name and password

Include Windows domain

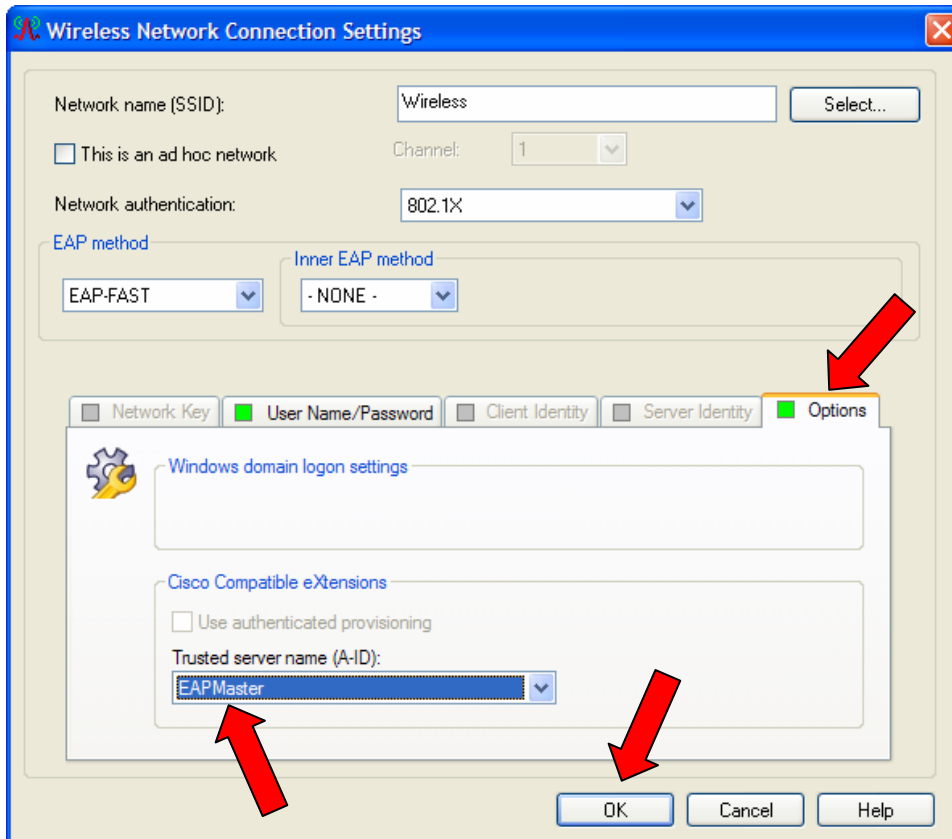
Domain\User Name:

Password:

Confirm password:

Hide characters as I type

8. Click on the **Options** tab
9. Click on the pull down arrow of the Trusted Server name (A-ID) and select **EAPMaster**
10. Click on **OK**



11. Click on **Apply** then click on **OK** to close

