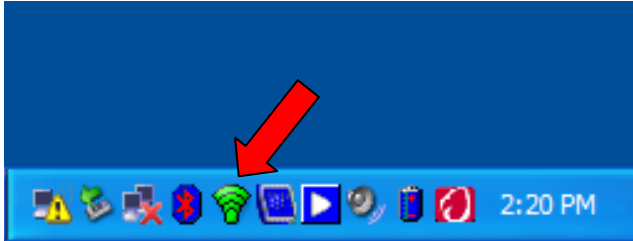


Setting up the Wireless network connection

(Intel cards)

There are four accounts that can be used on these laptops; they are Boelocal, EdTech, Teacher and Student. This procedure will have to be done in all four; it will not automatically carry over between computer profiles.

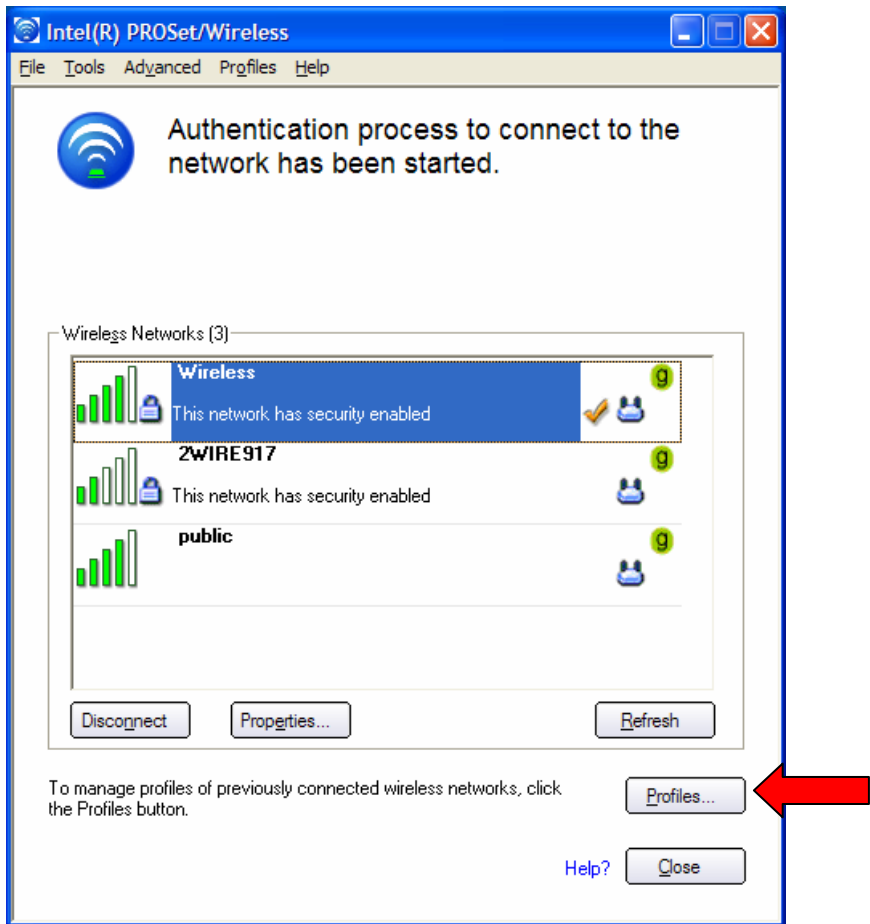
1. Log in into the laptop, in this document we are using the Student profile
2. Right click on the “fan” symbol in the system tray



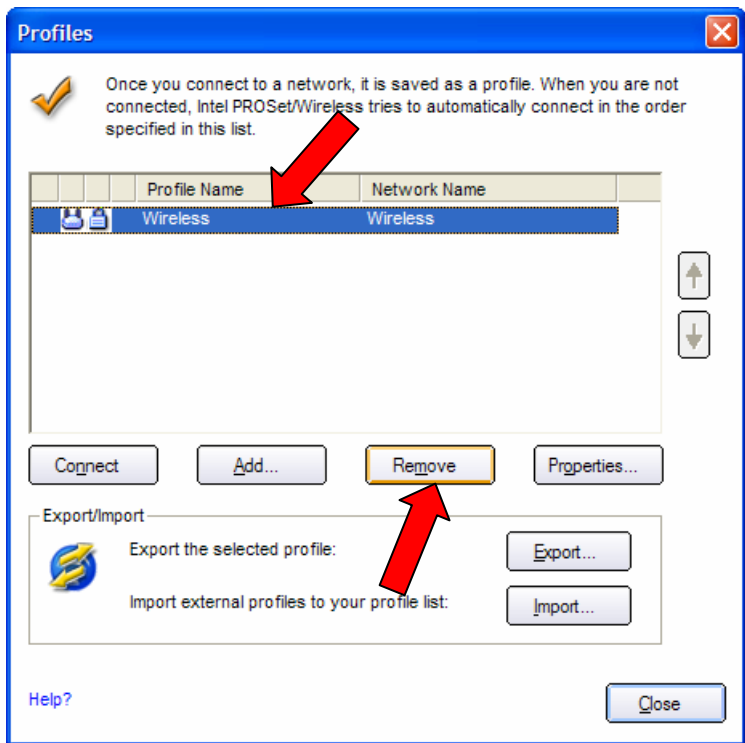
3. Select Open Intel PROSet/Wireless



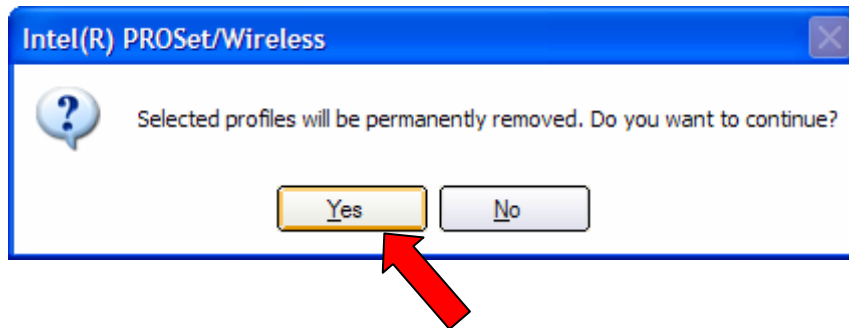
4. Click on Profiles



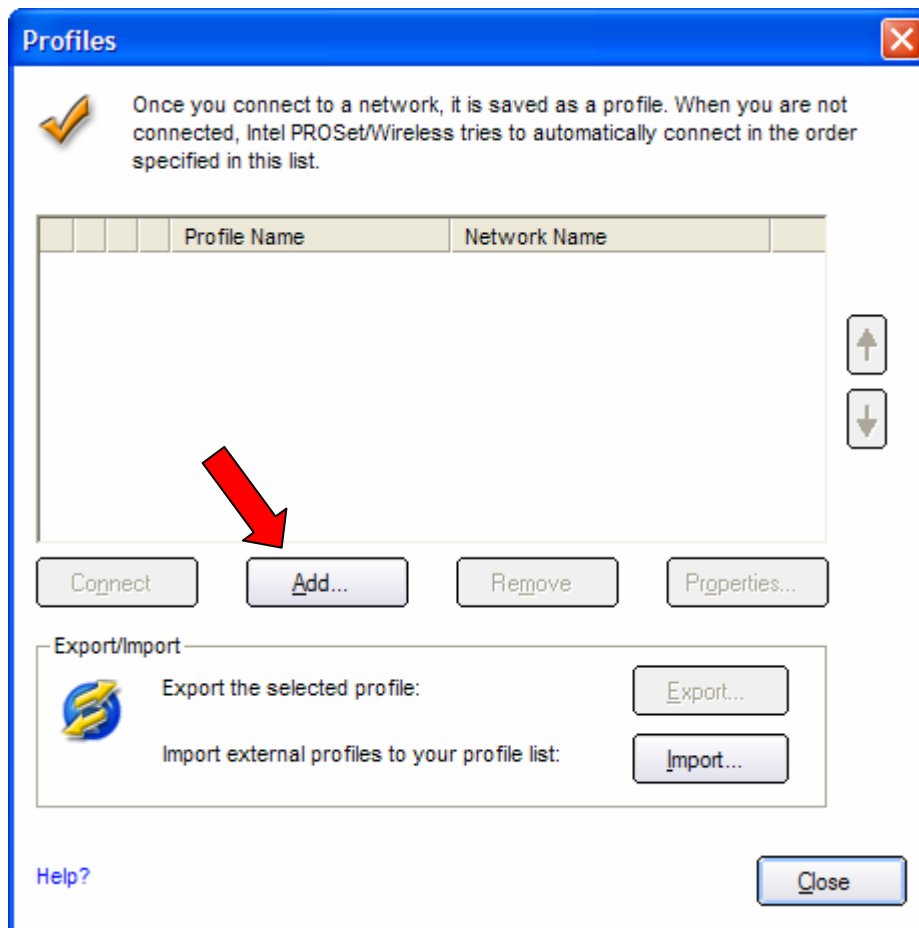
5. IF you are having wireless connectivity issues, highlight Wireless and then click on Remove



6. When prompted Do you want to continue? Click on Yes, twice



7. Click on the **Add** button



8. For the Student profile, enter the following information, then go to step 10:
a.

Profile	Wireless
SSID	Wireless (Note, this is case sensitive)
Operating Mode	Network (Infrastructure)
Network Authentication	802.1x

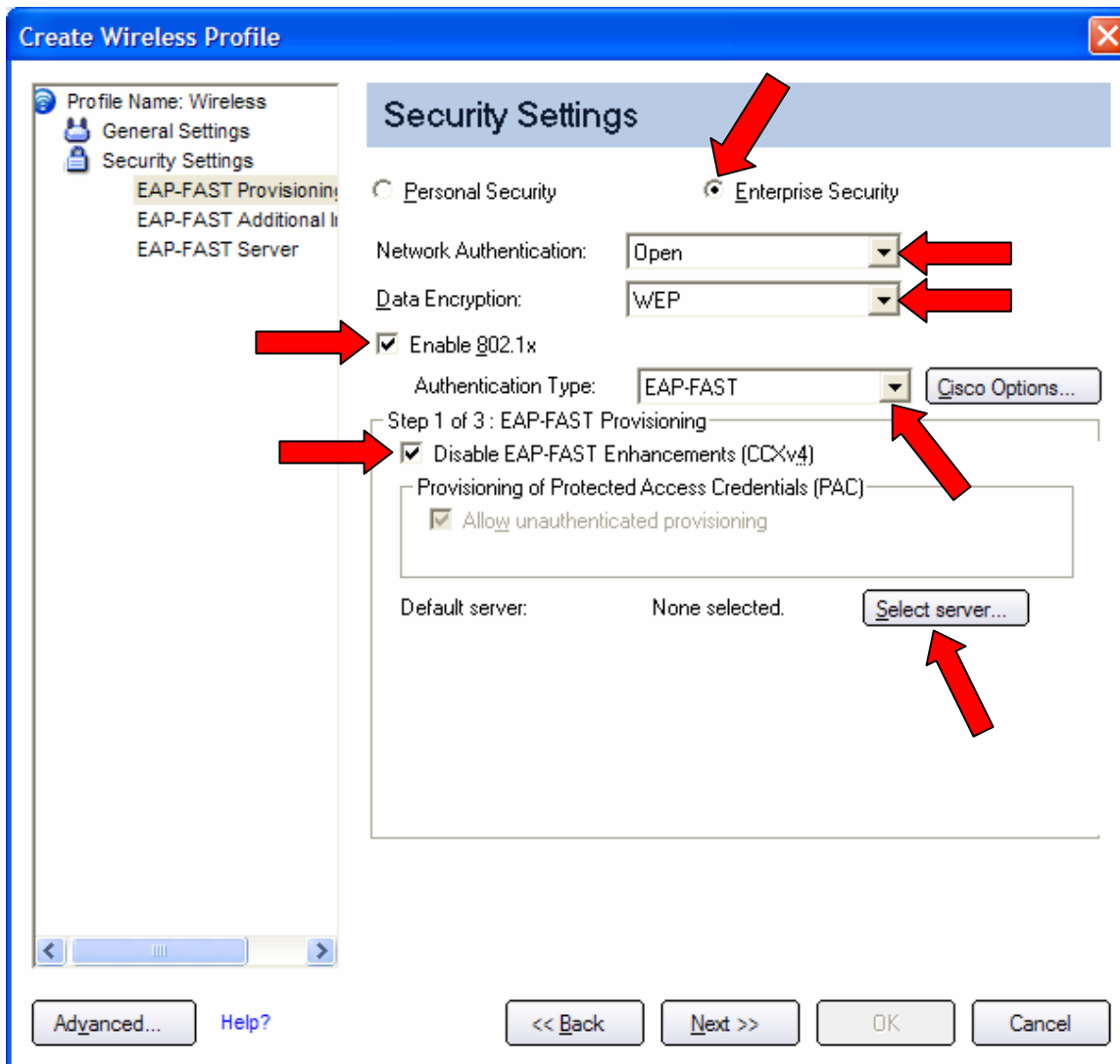
Click on Next

The screenshot shows the 'Wireless Profile Properties - Wireless' dialog box with the 'General Settings' tab selected. The 'Profile Name' field contains 'Wireless' and the 'Wireless Network Name (SSID)' field also contains 'Wireless'. Under 'Operating Mode', the 'Network (Infrastructure) - Connect to wireless networks and/or the Internet' radio button is selected. At the bottom, the 'Next >>' button is highlighted with a red arrow. Other buttons include '<< Back', 'OK', and 'Cancel'. A sidebar on the left shows 'Profile Name: Wireless', 'General Settings', and 'Security Settings'.

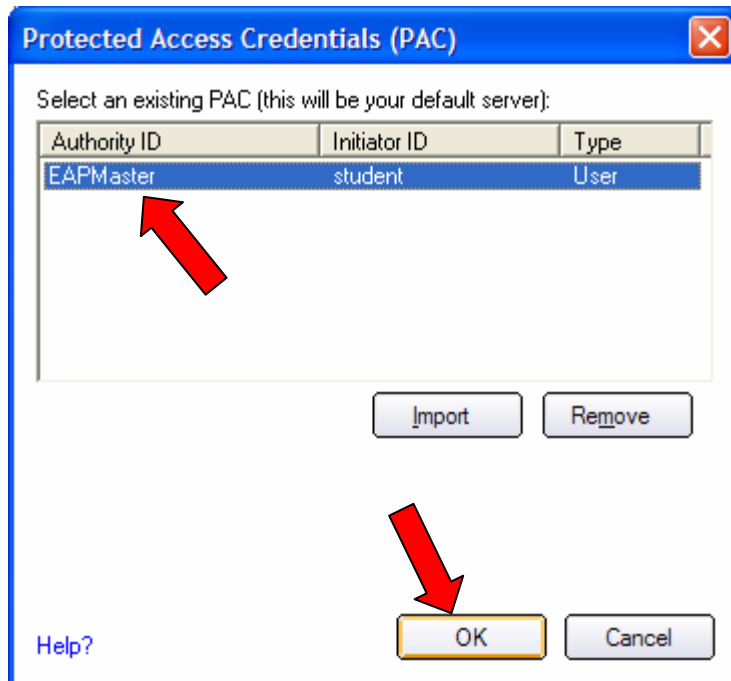
b.

Enterprise Security	Enable (check radio button)
Network Authentication	Open
Data Encryption	WEP
Enable 802.1x	Enable (add check mark)
Authentication Type	EAP-FAST
Disable EAP-FAST Enhancement	Enable (add check mark)-

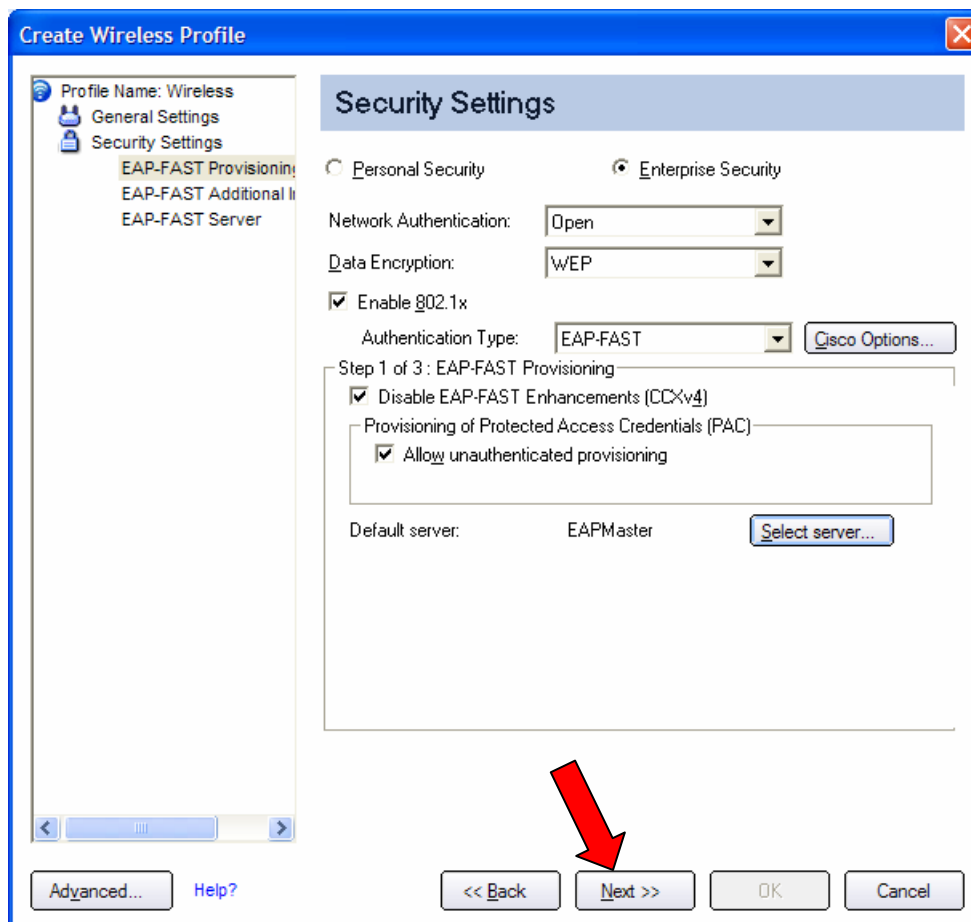
Click on Select server...



Select EAPMaster then click on OK



Click on Next



c.

Select Use the following	
User Name	Student
Domain	BBOE
Password	student
Confirm password	student

Click on Next, go to step 10

Create Wireless Profile

Profile Name: Wireless

General Settings

Security Settings

EAP-FAST Provisioning

EAP-FAST Additional Information

EAP-FAST Server

Security Settings

Personal Security Enterprise Security

Network Authentication: Open

Data Encryption: WEP

Enable 802.1x

Authentication Type: EAP-FAST Cisco Options...

Step 2 of 3: EAP-FAST Additional Information

User Credentials: Use the following

User Name: Student

Domain: BBOE

Password: *****

Confirm Password: *****

< || >

Advanced... Help?

<< Back Next >> OK Cancel

9. For the BoeLocal, EdTech and Teacher profiles, enter the following information

User Credentials	Prompt each time I connect
------------------	----------------------------

Create Wireless Profile

Profile Name: Wireless

General Settings

Security Settings

- EAP-FAST Provisioning
- EAP-FAST Additional Information
- EAP-FAST Server

Security Settings

Personal Security Enterprise Security

Network Authentication: Open

Data Encryption: WEP

Enable 802.1x

Authentication Type: EAP-FAST Cisco Options...

Step 2 of 3: EAP-FAST Additional Information

User Credentials: Prompt each time I connect

User Name:

Domain:

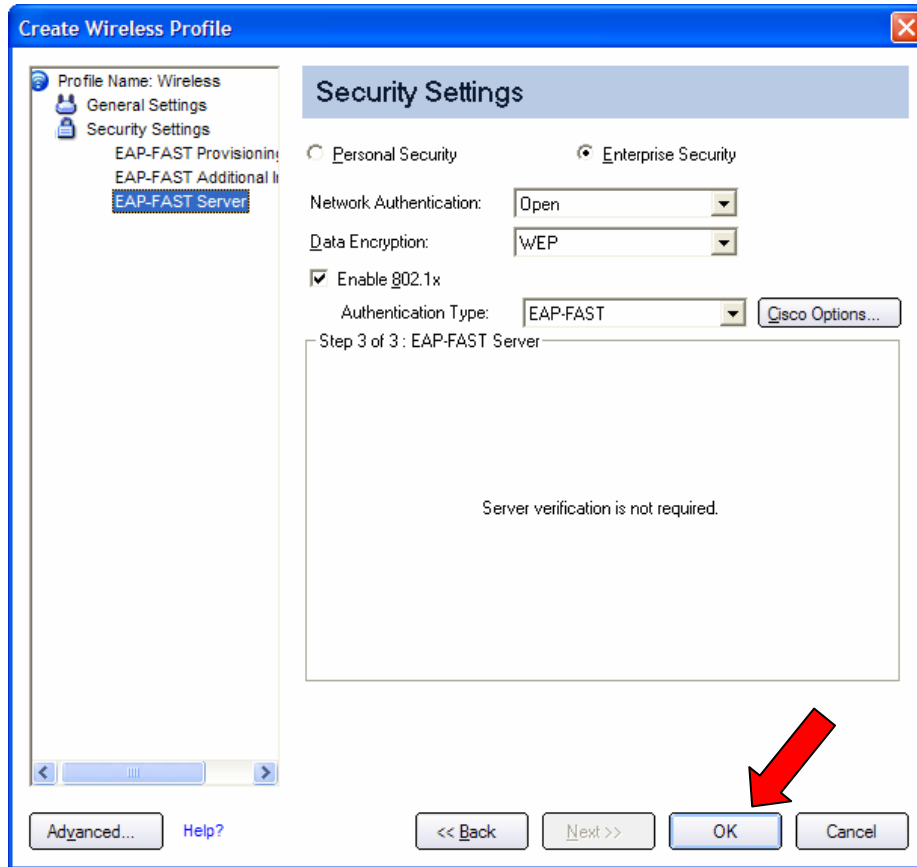
Password:

Confirm Password:

Advanced... Help?

<< Back Next >> OK Cancel


10. Click on OK



11. Click on Close

Profiles [X]


✓ Once you connect to a network, it is saved as a profile. When you are not connected, Intel PROSet/Wireless tries to automatically connect in the order specified in this list.


	Profile Name	Network Name
	Wireless	Wireless

[Up] [Down]


Connect Add... Remove Properties...

Export/Import

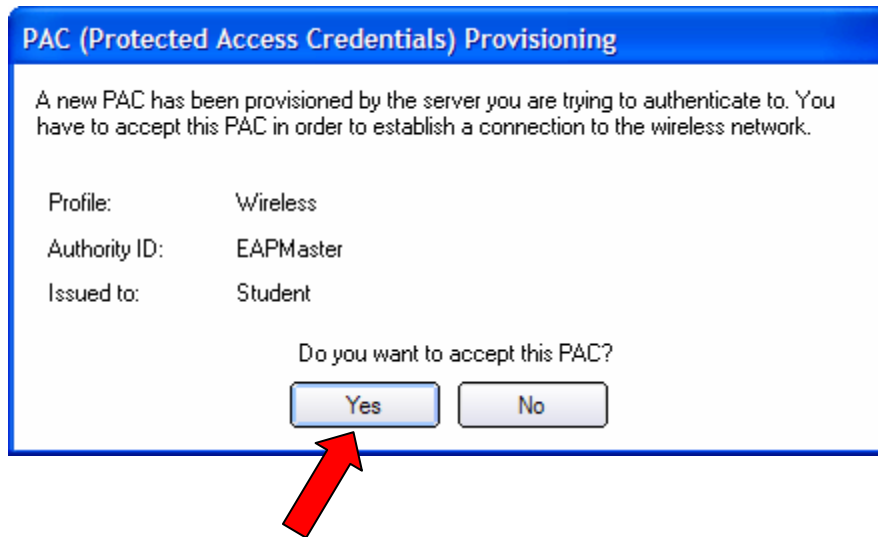
 Export the selected profile: [Export...]

 Import external profiles to your profile list: [Import...]

Help? [Close]



12. If/When you get a PAC prompt, select Yes



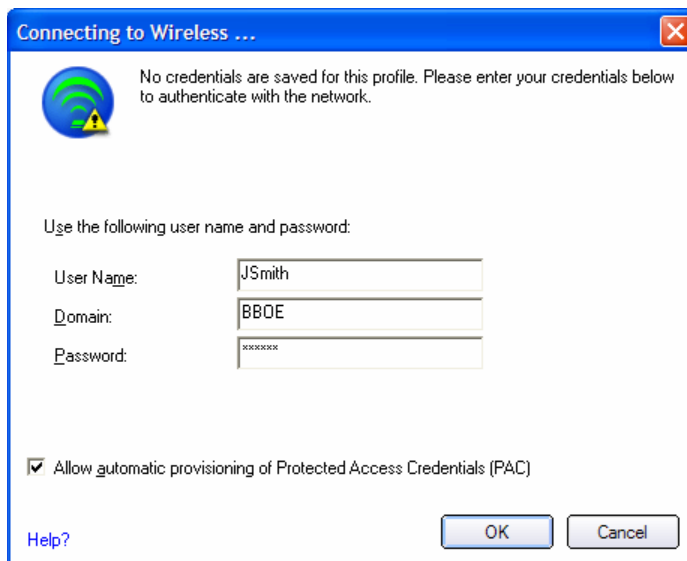
13. Test as follows: Reboot the laptop and login

- a. *Note: There are four accounts that can be used on these laptops; they are Boelocal, EdTech, Teacher and Student. This procedure will have to be done in all profiles EXCEPT the Student. Students will automatically connect under a more restrictive policy.*

14. In this example we will be logging in as teacher



15. Once in you should get prompted with a Connecting to Wireless prompt
 - a. The user should login with the same credentials as when they check their e-mail
 - b. In this example we will use John Smith



Connecting to Wireless ...

No credentials are saved for this profile. Please enter your credentials below to authenticate with the network.

Use the following user name and password:

User Name: JSmith

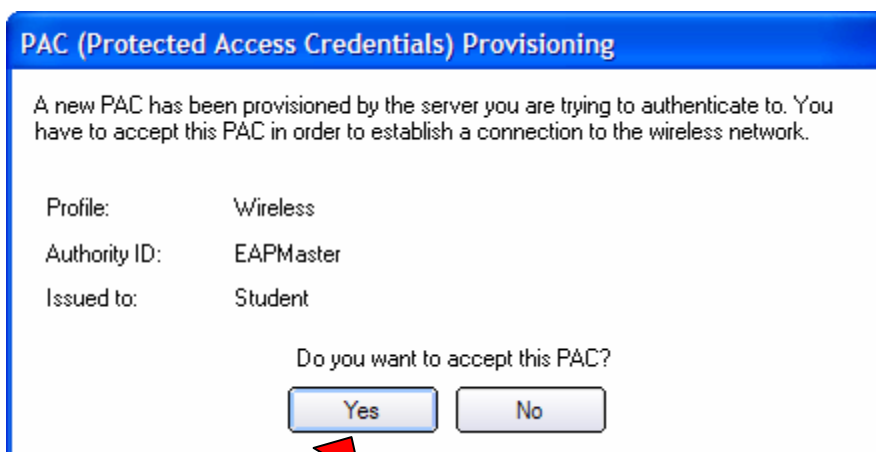
Domain: BBQE

Password: xxxxxx

Allow automatic provisioning of Protected Access Credentials (PAC)

Help? OK Cancel

16. If/When you get a PAC prompt, select Yes



PAC (Protected Access Credentials) Provisioning

A new PAC has been provisioned by the server you are trying to authenticate to. You have to accept this PAC in order to establish a connection to the wireless network.

Profile: Wireless

Authority ID: EAPMaster

Issued to: Student

Do you want to accept this PAC?

Yes No

17. You should now be able to access your resources.