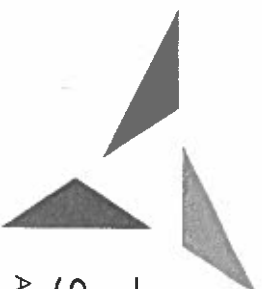


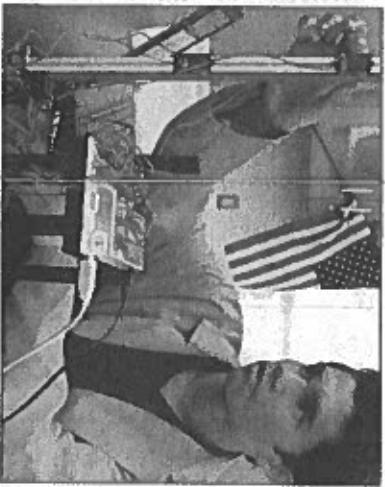
Join Us!

Nov. 7th & Dec. 11th 5:30-7:30pm

OPEN HOUSE



The Interdistrict
Science Magnet Schools
AT THE FAIRCHILD WHEELER CAMPUS



The Fairchild Wheeler Inter-district Magnet Campus was constructed and opened in August of 2013 with land donated to the Bridgeport Public Schools by the Fairchild Wheeler family. Nestled in a wooded setting, the building was designed and constructed as a learning tool. Wind turbines, roof-mounted solar panels, green roofs and recycled water generate energy and conserve resources for efficient building operation.

Instructional content has been designed in collaboration with multiple university partners including the University of Connecticut, University of Bridgeport, Sacred Heart University, Fairfield University, and Housatonic Community College to embed common themes, use of technology and career awareness. The curriculum is designed to engage 21st Century skills enabling students to collaboratively solve current and future challenges.

In each of our **three smaller learning communities**, students receive an interdisciplinary, STEM, project-based instruction that is in direct alignment to Common Core and career pathways. Students participate in a rigorous college to preparatory education. Learning tools such as the milling machines, PerkinElmer Lab, 3-D graphic printers, live animal lab and a full media suite allow students to engage in their education and prepare them for 21st Century skills.

Three STEM High Schools

under one Incredible Roof



Information Technology
& Software Engineering

AT THE FAIRCHILD WHEELER CAMPUS

The IT program prepares students for careers in science modeling, gaming, animation, simulation, media production and programming, to name a few. A Three-Dimensional (3D) holographic projection system is located in the school's Infinity Theater and full media suite for use by students when presenting their Capstone projects.



Biotechnology Research
& Zoological Sciences

AT THE FAIRCHILD WHEELER CAMPUS

This school is organized into Biotechnology, Pharmacology and Zoology pathways. Courses such as Genetics, Ecophysiology, Infectious Diseases and Human Anatomy & Physiology prepare students for careers such as medicine, healthcare, chemical engineering, environmental studies and Veterinary medicine.



Aerospace/Hydrospace
Engineering & Physical Sciences

AT THE FAIRCHILD WHEELER CAMPUS

Aerospace and Hydrospace instruction includes experiencing the engineering process and the design, development and testing of aircraft and submersibles for exploration or research. Industry-grade 3D printers and design software are incorporated for production of student projects.

Why choose Fairchild Wheeler?

1. Semester-based classes allow for 8-subjects a year, four courses at a time
2. 80 minute classes support **project-based learning** opportunities, in-depth laboratory experiences, and continuity of instruction
3. **Magnet-themed** courses offer unique curriculum, developed with university partners.
4. Opportunities for **college credit** in our Early College Experience courses and AP courses. *We are recognized as UCONN's **TOP 5** high schools for ECE courses.
5. **Internship opportunities** with our industry partners, such as Sikorsky and the Beardsley Zoo.
6. Senior **capstone** project
7. **98.8% graduation rate**
8. Maintain ability to compete in **sports** at your district high school
9. **2018 Magnet Schools of America Excellence award**



Information Technology
& Software Engineering
AT THE FAIRCHILD WHEELER CAMPUS

Dr. Victor Black **Mandy Cheung** **Jennifer Rodriguez**
Principal Guidance Counselor Secretary
(203) 275-3373 (203)275-3364 (203)275-3372
vblack@bridgeport.edu kcheung@bridgeport.edu jlicaga@bridgeport.edu



Biotechnology Research
& Zoological Sciences
AT THE FAIRCHILD WHEELER CAMPUS

Dr. Michael Watson **Carli Reaes** **Sandy Bell**
Principal Guidance Counselor Secretary
(203) 275-3436 (203)275-3424 (203)275-3413
mwatson@bridgeport.edu creaes@bridgeport.edu sbell@bridgeport.edu



Aerospace/Hydrospace
Engineering & Physical Sciences
AT THE FAIRCHILD WHEELER CAMPUS

Mr. Jay Lipp **Jackie Gardner** **Lisa Salgado**
Principal Guidance Counselor Secretary
(203) 275-3343 (203)275-3333 (203)275-3374
jlipp@bridgeport.edu jgardner@bridgeport.edu lsalgado@bridgeport.edu



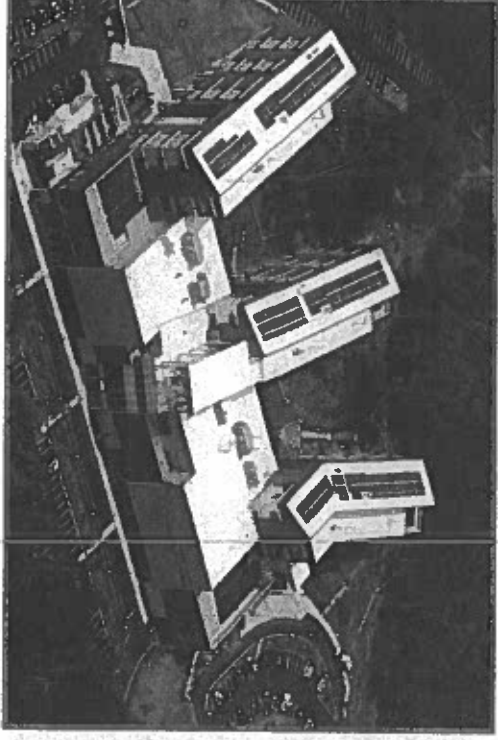
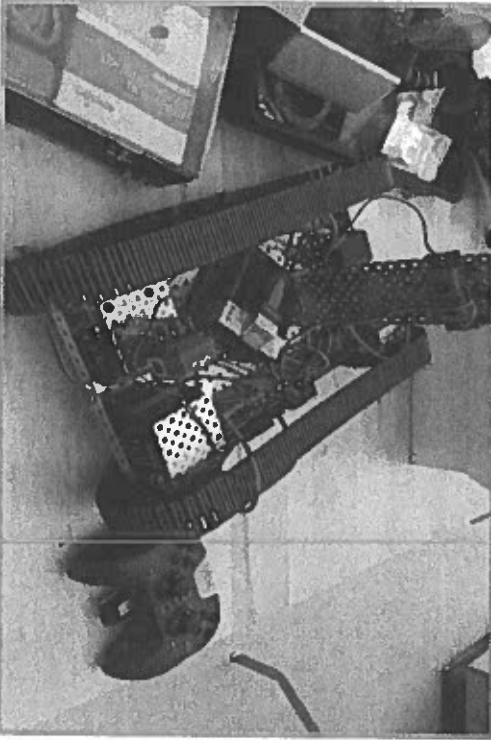
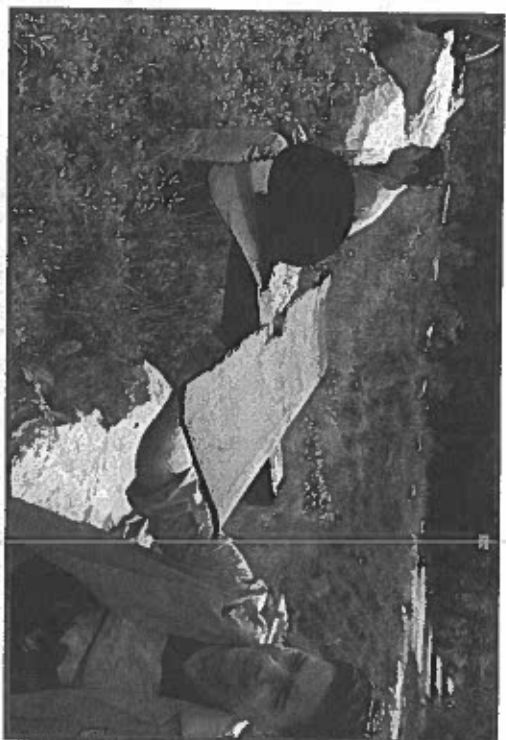
The Interdistrict
Science Magnet Schools
AT THE FAIRCHILD WHEELER CAMPUS

Jill Sam **Lindsey Ciocci** **Melissa Triago** **Vincent Samuolis**
Main Office Secretary Recruitment Specialist School Psychologist Social Worker
(203) 275-3337 (203)275-3350 (203)275-3315 (203)275-3336
jsam@bridgeport.edu lciocci@bridgeport.edu mtriago@bridgeport.edu vsamuolis@bridgeport.edu

Beth Furnari **Dave Henry** **Nadia Pearce** **Edwin Williams**
Assistant Principal Assistant Principal Guidance Counselor Guidance Counselor
(203)275-3389 203-275-3426 (203)275-3304 (203)275-3336
bfurnar@bridgeport.edu dhenry@bridgeport.edu npearce@bridgeport.edu ewilliams@bridgeport.edu

Open Houses:
Wednesday,
Nov. 7th, 2018
&
Tuesday,
Dec. 11th, 2018
5:30-7:30 PM

Online
Applications
Open
October 1 st
January 1 th



BRIDGEPORT PUBLIC SCHOOLS